



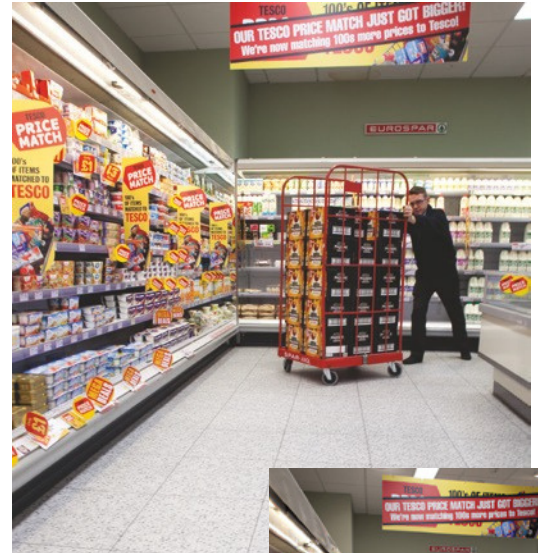
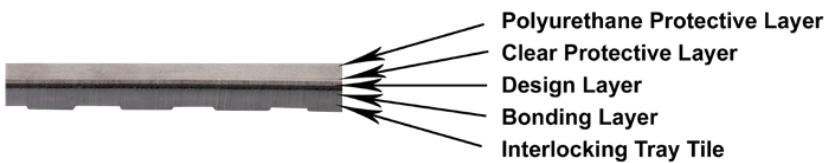
SUPRATILE

Retail &
Commercial

Design & Urban
Collection

Design Collection

Our Design Series use patented hidden interlock joints making these tiles look like real slate, tile marble or terrazzo. Ideal for residential use, retail stores, offices, lobbies, galleries, and more. Each tile is manufactured from five layers bonded under intense heat and pressure. Integral clear protective top layer protects surface from wear and allows for easy cleaning. Available in seven beautiful decorative finishes. Coordinated joint colors give the look of grout.



Wood Range



Light Oak



Vintage Maple



Vintage Ash



Vintage Sand

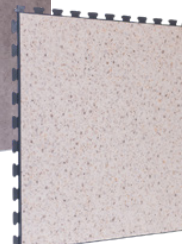


Dark Oak

Stone Range



Shalestone



Cream Terrazzo



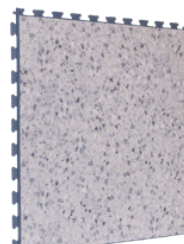
Limestone



Sandstone



Granite



Grey Terrazzo



Volcano



Polished Concrete



Clay

Urban Tile is a new robust interlocking loose lay floor system available in modern decor finishes.



Concrete Charcoal - 59233

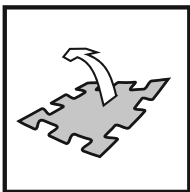
Dimensions

■ 22.8 inches x 22.8 inches ■ 6.5mm Thickness ■ PU with 0.7mm wear layer.

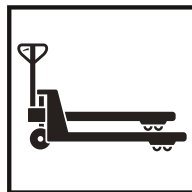


Concrete Brown - 59232

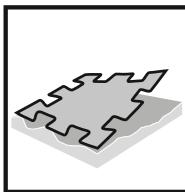
Product Overview



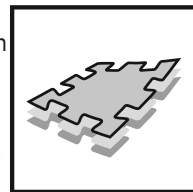
Loose lay -
No adhesive
required.



Robust interlock
- Suitable for
wheeled traffic
up to 2,600lbs.



No subfloor
preparation - Can
be installed over
existing floor
coverings, also
poor and uneven
sub floor



High dimen-
sional stability
- Heterogeneous
construction
with glass fibre
reinforcement.



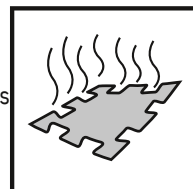
Improves acous-
tic performance
- Providing
significant noise
reduction.



No need to
interrupt daily
business activity
- No loss of
revenue.



Excellent anti
fatigue properties
- Comfortable to
walk and stand
on.



Low VOC
emissions

The Urban Tile is a heterogeneous, 100% recycled PVC, heavy duty interlocking 6.5mm tile. This robust tile is suitable for heavy traffic areas. The commercial classification is 34 and Industrial 43. The Urban Tile is suitable for wheeled traffic up to 2,600 lbs and can be quickly installed over poor subfloors, making this tile the perfect flooring for renovation projects.



Concrete Grey - 59234

Urban Tile Collection

The Urban Tile is available in 13 modern designs

Concrete



Grey - 59234



Brown - 59232



Charcoal - 59233



Brown Polished - 4118

Stone



Bronze - 40876



Shale - 46954



Clay - 40986

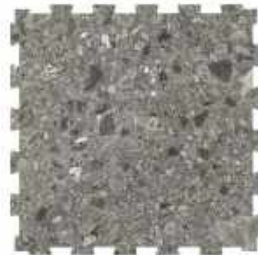
Pebble



Brown Pebble - 46151



Grey Pebble - 46921



Dark Grey Pebble - 46961

Terrazzo



Cream Terrazzo - 46164

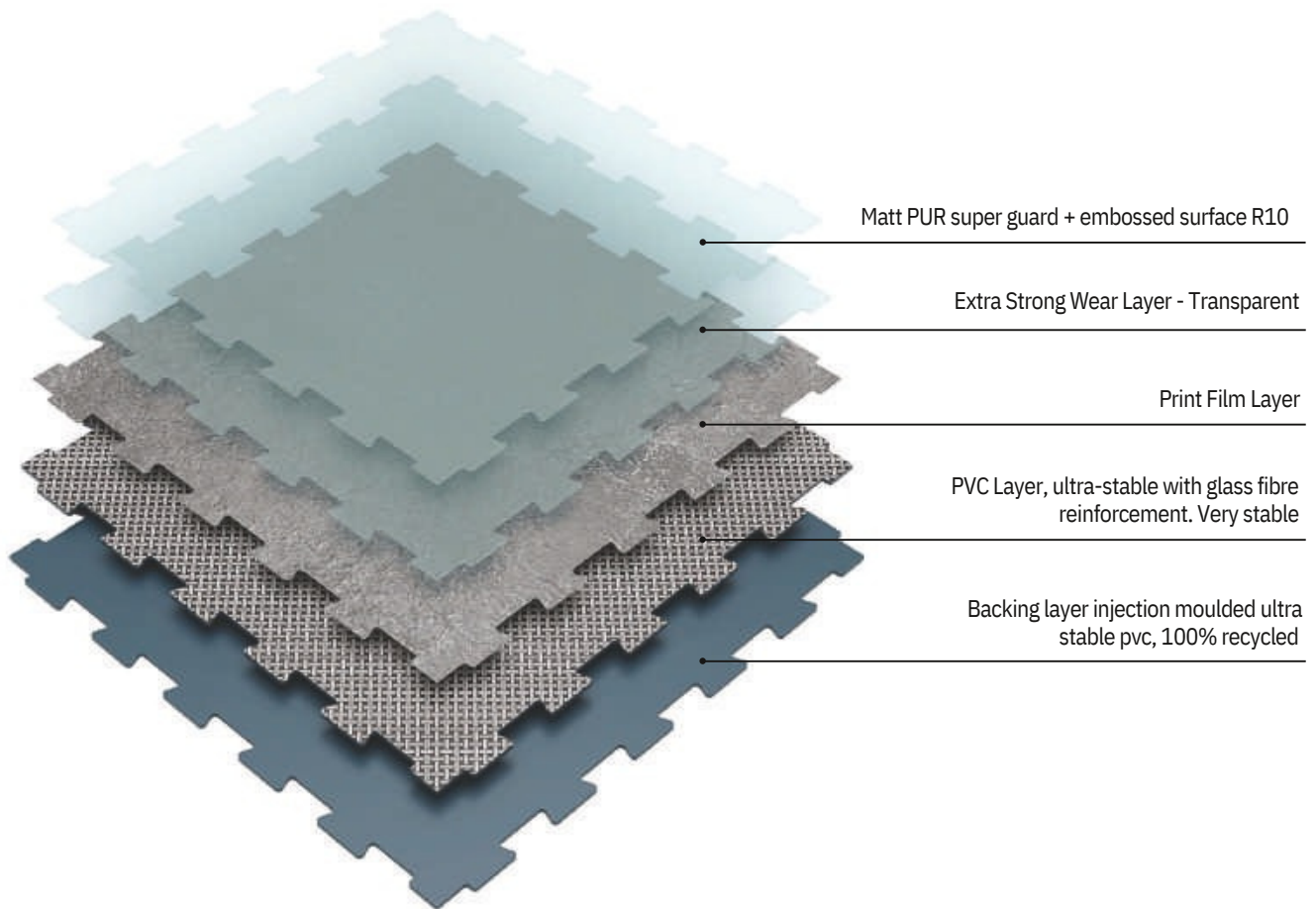


Brown Terrazzo - 46921



Grey Terrazzo - 46946

Product Construction



Urban Tile is a multi-layered interlocking loose lay vinyl tile with polyurethane treatment (PUR+), 6.5mm thick with a dovetail joint, abrasion group T. It is manufactured by SupraTile using a continuous patented high pressure process

The Urban Tile wear layer is reinforced with oblong fillers that offer an outstanding resistance to traffic.

Urban Tile is reinforced with a ultra-stable glass fiber grid on an pressed homogeneous layer.

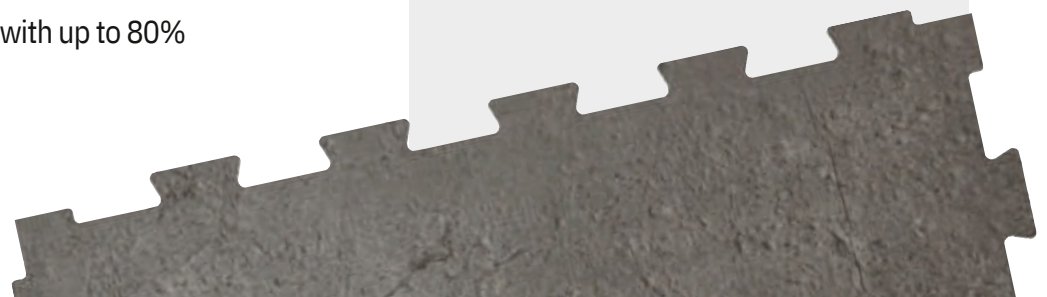
Urban Tile backing is an homogeneous component made from ultra-stable material using a high pressure process.

It is made of 100% controlled recycled materials.

It is 100% recyclable and made with up to 80% recycled content.

Urban Tile

- Resistant to heavy traffic
- Fast renovation: can be installed over existing floor covering
- No subfloor preparation, no adhesive and no production stoppage (no loss or revenue)
- Polyurethane surface treatment PUR+ for ease of maintenance
- 13 designs available. Mix and match colours to create zoning.



Heavy Traffic Resistant

Dynamic Load: up to 2,600 lbs

Static Load: up to 50kg/cm²

Installation on any type of surface



Resin



Concrete



Wet Surfaces
up to 7% humidity / 92%RH



Tiles

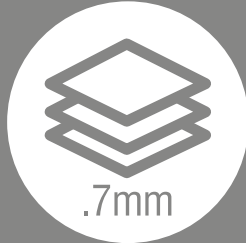


Asbestos

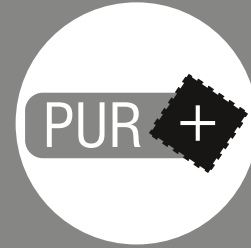
Hard - Wearing



- Tiles are injection moulded and pressed.



- 0.7mm wear layer



- PUR + surface treatment enabling easy maintenance

Comfort & Safety



- 12dB less noise than tiling when users walk on it.
- Underfoot comfort: reduces fatigue



- Higher slip-resistance than other types of surface (R10 rated)

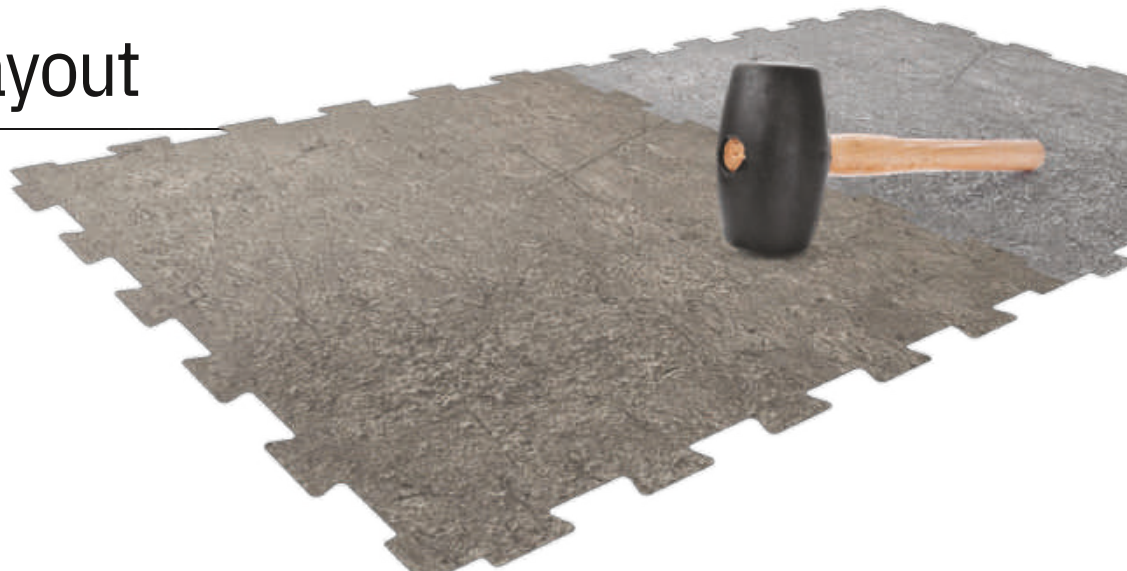


- Softer than ceramic tiles in the event of impact

Designs & Layout

- Easy to install: modular tile format

- 13 finishes





Sustainability



COMPOSITION

- 100% REACH compliant
- FREE of Formaldehyde
- FREE of heavy metals
- FREE of solvent



LIFE CYCLE ANALYSIS

- Eco-designed according to a product specific Life Cycle Analysis
- Product specific EPD (Environmental Products Declaration) available
- Manufactured in an ISO 14001 compliant site



INDOOR AIR QUALITY

- TVOC emissions 10 times better than norm requirements (TVOC <math><100\mu\text{g}/\text{m}^3</math> after 28 days)
- M1 certified
- Comply with AgBB protocol
- No formaldehyde emissions



RECYCLED CONTENT

- 80% recycled content
- 100% REACH compliant recycled content



RECYCLING

- 100% recyclable product

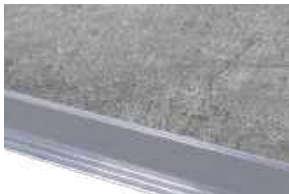
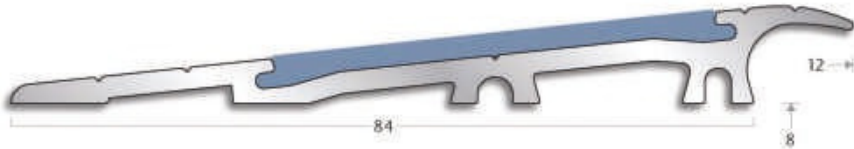


INSTALLATION

- Adhesive free installation

Accessories

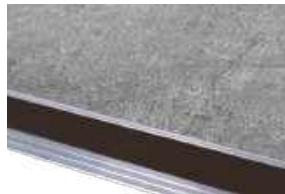
Profile Edge



Grey



Black



Brown

The profiles are designed for use in the most demanding environments where frequent heavy foot and trolley traffic can be expected.

Manufactured using high quality aluminium to withstand repeated heavy traffic impacts. It provides a safe transition between wood, tiles and other resilient floor coverings.

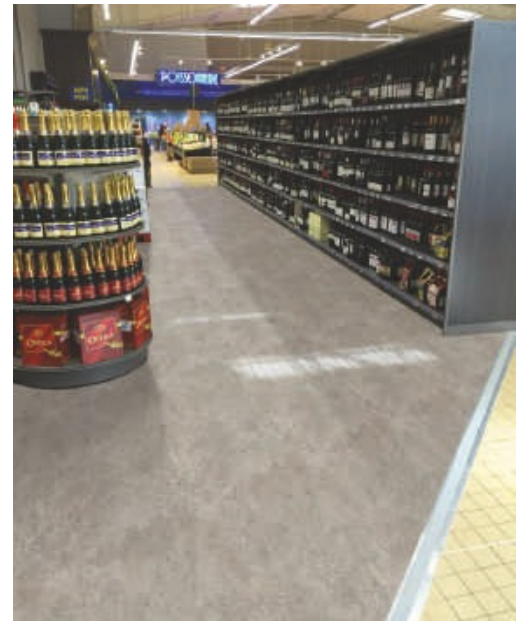
This profile incorporates a slip-resistant pvc insert available in 3 options: grey, black and brown.

SPECIFICATION

Type: Ramp Profile
Environment: Interior
Material: Aluminium/pvc
Width: 84mm
Gauge: 8mm
Used with: Wood, ceramic tiles
Length: 2.50m

INSERT OPTIONS

Interior: ELINS50 (25m coil)



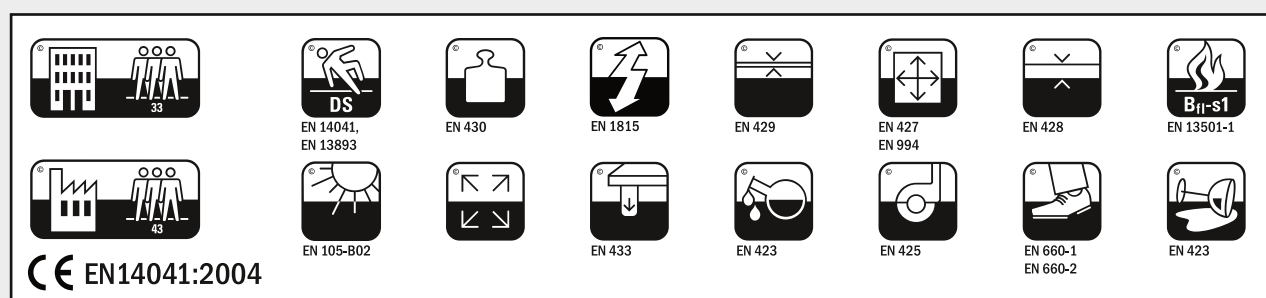
Mat Entrance

- Same thickness as Urban Tiles
- Full kit ready-to-lay including the mat, frame sections and fastenings
- Withstands intensive footfall
- Surface not damaged (no adhesives or screws)
- Full 100% looselay system



Technical Specification

TECHNICAL SPECIFICATION	NORM	URBAN TILE
Classification	ISO 20582	34/43
Tile Dimensions	ISO 24342	22.8 in x 22.8 in
Packaging	3 Tiles	1m2/Box
Thickness	EN ISO 24342	6.5mm
Wear Layer	EN ISO 24342	0.7mm
Weight	EN ISO 24342	9.6kg/m2
Abrasion	EN 660.2	T
Fire Class	EN 13501.1	Bfl-s1
Indentation	ISO 24342	<0.10mm
Acoustic	ISO 717.2	12 db
Caster Wheel	EN 425	No Damage
Dimensional Stability	ISO 23999	0.15%
Anti-slip (coefficient)	BS EN 13893	>.30
Anti-slip	BS EN 51130	R10
Thermal Resistance	ISO 8302	+/- 0.013m2 K/W
Anti-Static	BS EN 1815	Rubber Sole: -1.0kV PVC Sole: -1.7kV
Chemical Resistance	BS EN 423	Good



Recyclable

BRE-Green Guide Ratings A+





Distributed by:

Elite Xpressions LLC

2361 Pearse Dr, Corpus Christi, TX 78415

www.elitegaragefloors.com

361-906-0863

